

Contents

New disease loci

493 Loss of function of the E3 ubiquitin-protein ligase UBE3B causes Kaufman oculocerebrofacial syndrome *E Flex, A Ciolfi, V Caputo, V Fodale, C Leoni, D Melis, M F Bedeschi, L Mazzanti, A Pizzuti, M Tanaglia, G Zampino*



OPEN ACCESS

500 *TBX4* mutations (small patella syndrome) are associated with childhood-onset pulmonary arterial hypertension *W S Kersjens-Frederikse, E M H F Bongers, M T R Rooftoof, E M Leter, J M Douwes, A Van Dijke, A Vonk-Noordegraaf, K K Dijk-Bos, L H Hoefsloot, E S Hoendermis, J J P Gille, B Sikkema-Raddatz, R M W Hofstra, R M F Berger*



OPEN ACCESS

507 *GATAD2B* loss-of-function mutations cause a recognisable syndrome with intellectual disability and are associated with learning deficits and synaptic undergrowth in *Drosophila* *M H Willemsen, B Nijhof, M Fenckova, W M Nillesen, E M H F Bongers, A Castells-Nobau, L Asztalos, E Viragh, B W M van Bon, E Tezel, J A Veltman, H G Brunner, B B A de Vries, J de Ligt, H G Yntema, H van Bokhoven, B Isidor, C Le Caignec, E Lorino, Z Asztalos, D A Koolen, L E L M Vissers, A Schenck, T Kleefstra*



EDITOR'S CHOICE

515 Recessive truncating *NALCN* mutation in infantile neuroaxonal dystrophy with facial dysmorphism *Ç Koroğlu, M Seven, A Tolun*

521 A novel intellectual disability syndrome caused by GPI anchor deficiency due to homozygous mutations in *PIGT* *M Kvarnung, D Nilsson, A Lindstrand, G C Korenke, S C C Chiang, E Blennow, M Bergmann, T Stödberg, O Mäkitie, B-M Anderlid, Y T Bryceson, M Nordenskjöld, A Nordgren*

Methods

529 *CNVinspector*: a web-based tool for the interactive evaluation of copy number variations in single patients and in cohorts *E Knierim, J M Schwarz, M Schuelke, D Seelow*

Quantitative traits

534 Identification of well-differentiated gene expressions between Han Chinese and Japanese using genome-wide microarray data analysis *Y Yuan, L Yang, M Shi, D Lu, H Lou, Y-P P Chen, L Jin, S Xu*

Chromosomal rearrangements

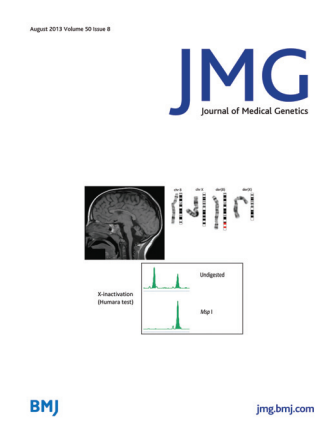
543 A *de novo* X;8 translocation creates a *PTK2-THOC2* gene fusion with *THOC2* expression knockdown in a patient with psychomotor retardation and congenital cerebellar hypoplasia *E Di Gregorio, F T Bianchi, A Schiavi, A M A Chiotto, M Rolando, L V di Cantogno, E Grosso, S Cavaliere, A Calcia, D Lacerenza, O Zuffardi, S F Retta, G Stevanin, C Marelli, A Durr, S Forlani, J Chelly, F Montarolo, F Tempia, H E Beggs, R Reed, S Squadrone, M C Abete, A Brussino, N Ventura, F Di Cunto, A Brusco*

Cancer genetics

552 Refining the role of *pms2* in Lynch syndrome: germline mutational analysis improved by comprehensive assessment of variants *E Borràs, M Pineda, J Cadiñanos, J del Valle, A Brieger, I Hinrichsen, R Cabanillas, M Navarro, J Brunet, X Sanjuan, E Musulen, H van der Klift, C Lázaro, G Plotz, I Blanco, G Capellá*

PostScript

565 Letter



Cover credit: Chromosomal rearrangement resulting in fusion transcript from Di Gregorio *et al.* (see page 543).

Receive regular table of contents by email. Register using this QR code.



EDITOR'S CHOICE

This article has been chosen by the Editor to be of special interest or importance and is freely available online.



OPEN ACCESS

This article has been made freely available online under the BMJ Journals Open Access scheme. See <http://jmg.bmj.com/site/about/guidelines.xhtml#open>

C O P E COMMITTEE ON PUBLICATION ETHICS

This journal is a member of and subscribes to the principles of the Committee on Publication Ethics
www.publicationethics.org.uk

equator network

recycle
When you have finished with this please recycle it