

Contents

Cancer genetics

- 283** Guidelines for surveillance of individuals with constitutional mismatch repair-deficiency proposed by the European Consortium "Care for CMMR-D" (C4CMMR-D) *H F A Vasen, Z Ghorbanoghli, F Bourdeaut, O Cabaret, O Caron, A Duval, N Entz-Werle, Y Goldberg, D Ilencikova, C P Kratz, N Lavoine, J Loeffen, F H Menko, M Muleris, G Sebille, C Colas, B Burkhardt, L Brugieres, K Wimmer, on behalf of the EU-Consortium Care for CMMR-D (C4CMMR-D)*
- 294** Expanding the phenotype of mutations in DICER1: mosaic missense mutations in the RNase IIIb domain of *DICER1* cause GLOW syndrome *S Klein, H Lee, S Ghahremani, P Kempert, M Ischander, M A Teitell, S F Nelson, J A Martinez-Agosto*

New disease loci

- 303** *VPS53* mutations cause progressive cerebello-cerebral atrophy type 2 (PCCA2) *M Feinstein, H Flusser, T Lerman-Sagie, B Ben-Zeev, D Lev, O Agamy, I Cohen, R Kadir, S Sivan, E Leshinsky-Silver, B Markus, O S Birk*

Somatic mosaicism

- 309** CGG allele size somatic mosaicism and methylation in *FMR1* premutation alleles *D I Pretto, G Mendoza-Morales, J Lo, R Cao, A Hadd, G J Latham, B Durbin-Johnson, R Hagerman, F Tassone*

Quantitative traits

- 319** Mapping of hepatic expression quantitative trait loci (eQTLs) in a Han Chinese population *X Wang, H Tang, M Teng, Z Li, J Li, J Fan, L Zhong, X Sun, J Xu, G Chen, D Chen, Z Wang, T Xing, J Zhang, L Huang, S Wang, X Peng, S Qin, Y Shi, Z Peng*

- 327** Genome-wide association study of smoking behaviours among Bangladeshi adults *M Argos, L Tong, B L Pierce, M Rakeibuz-Zaman, A Ahmed, T Islam, M Rahman, R Paul-Brutus, R Rahaman, S Roy, F Jasmine, M G Kibriya, H Ahsan*
- 334** Genome-wide association study identifies new disease loci for isolated clubfoot *T-X Zhang, G Haller, P Lin, D M Alvarado, J T Hecht, S H Blanton, B S Richards, J P Rice, M B Dobbs, C A Gurnett*

Copy-number variation

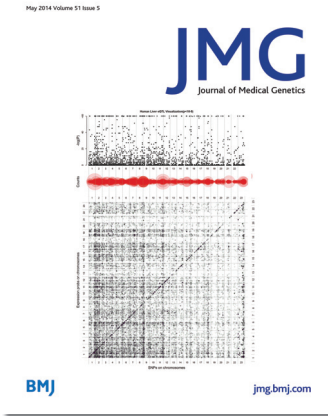
- 340** Recurrent X chromosome-linked deletions: discovery of new genetic factors in male infertility *D Lo Giacco, C Chianese, E Ars, E Ruiz-Castañe, G Forti, C Krausz*

Genotype-phenotype correlations

- 345** A comprehensive association analysis confirms *ZMIZ1* to be a susceptibility gene for vitiligo in Chinese population *Y Sun, X Zuo, X Zheng, F Zhou, B Liang, H Liu, R Chang, J Gao, Y Sheng, H Cui, W Wang, A K Andiappan, O Rotzschke, S Yang, L Sun, F Zhang, X Zhang, Y Ren, J Liu*

PostScript

- 354** Correspondence



Cover credit: Mapping of hepatic expression quantitative trait loci (eQTLs) in a Han Chinese population from Wang *et al.* pg 319.

Receive regular table of contents by email. Register using this QR code.



This article has been chosen by the Editor to be of special interest or importance and is freely available online.



This article has been made freely available online under the BMJ Journals Open Access scheme. See <http://jmg.bmj.com/site/about/guidelines.xhtml#open>



This journal is a member of and subscribes to the principles of the Committee on Publication Ethics <http://publicationethics.org/>



MCQs The online version of this article contains multiple choice questions hosted on BMJ Learning.