



# The very low penetrance of cystic fibrosis for the R117H mutation: a reappraisal for genetic counselling and newborn screening

C Thauvin-Robinet,<sup>1,3</sup> A Munck,<sup>2,3,4</sup> F Huet,<sup>2,3,5</sup> E Génin,<sup>6</sup> G Bellis,<sup>7</sup> E Gautier,<sup>8</sup> M-P Audrézet,<sup>9,10</sup> C Férec,<sup>9,10</sup> G Lalau,<sup>9,11</sup> M Des Georges,<sup>9,12</sup> M Claustres,<sup>9,12</sup> T Bienvenu,<sup>9,13</sup> B Gérard,<sup>9,14</sup> P Boisseau,<sup>9,15</sup> F Cabet-Bey,<sup>9,16</sup> D Feldmann,<sup>9,17</sup> C Clavel,<sup>9,18</sup> E Bieth,<sup>9,19</sup> A Iron,<sup>9,20</sup> B Simon-Bouy,<sup>9,21</sup> C Costa,<sup>9,22</sup> R Medina,<sup>22</sup> J Leclerc,<sup>9,11</sup> D Hubert,<sup>3,23</sup> R Nové-Josserand,<sup>3,24</sup> I Sermet-Gaudelus,<sup>3,25</sup> G Rault,<sup>3,26</sup> J Flori,<sup>27</sup> S Leroy,<sup>3,28</sup> N Wizla,<sup>3,29</sup> G Bellon,<sup>3,30</sup> A Haloun,<sup>3,31</sup> S Perez-Martin,<sup>3,5</sup> G d'Acremont,<sup>3,32</sup> H Corvol,<sup>3,33</sup> A Clément,<sup>3,33</sup> E Houssin,<sup>2</sup> C Binquet,<sup>8</sup> C Bonithon-Kopp,<sup>8</sup> C Alberti-Boulmé,<sup>34</sup> M A Morris,<sup>35</sup> L Faivre,<sup>1</sup> M Goossens,<sup>9,22</sup> M Roussey,<sup>2,3,36</sup> the Collaborating Working Group on R117H and E Girodon<sup>9,22</sup>

For numbered affiliations see end of article

Correspondence to:  
Dr C Thauvin-Robinet, Centre de Génétique, Hôpital d'Enfants, 10, bd Maréchal de Lattre de Tassigny, BP 77 908, 21079 Dijon cedex, France;  
christel.thauvin@chu-dijon.fr

Received 16 February 2009  
Revised 20 April 2009  
Accepted 25 May 2009  
Published Online First  
29 June 2009

## ABSTRACT

**Background:** Cystic fibrosis (CF) is caused by compound heterozygosity or homozygosity of CF transmembrane conductance regulator gene (*CFTR*) mutations. Phenotypic variability associated with certain mutations makes genetic counselling difficult, notably for R117H, whose disease phenotype varies from asymptomatic to classical CF. The high frequency of R117H observed in CF newborn screening has also introduced diagnostic dilemmas. The aim of this study was to evaluate the disease penetrance for R117H in order to improve clinical practice.

**Methods:** The phenotypes in all individuals identified in France as compound heterozygous for R117H and F508del, the most frequent CF mutation, were described. The allelic prevalences of R117H ( $p_{R117H}$ ), on either intron 8 T5 or T7 background, and F508del ( $p_{F508del}$ ) were determined in the French population, to permit an evaluation of the penetrance of CF for the [R117H]+[F508del] genotype.

**Results:** Clinical details were documented for 184 [R117H]+[F508del] individuals, including 72 newborns. The disease phenotype was predominantly mild; one child had classical CF, and three adults' severe pulmonary symptoms. In 5245 healthy adults,  $p_{F508del}$  was 1.06%,  $p_{R117H;T7}$  0.27% and  $p_{R117H;T5} < 0.01\%$ . The theoretical number of [R117H;T7]+[F508del] individuals in the French population was estimated at 3650, whereas only 112 were known with CF related symptoms (3.1%). The penetrance of classical CF for [R117H;T7]+[F508del] was estimated at 0.03% and that of severe CF in adulthood at 0.06%.

**Conclusions:** These results suggest that R117H should be withdrawn from CF mutation panels used for screening programmes. The real impact of so-called disease mutations should be assessed before including them in newborn or preconceptional carrier screening programmes.

Cystic fibrosis (CF, MIM 219700) is one of the most frequent life shortening autosomal recessive diseases, characterised in its classical form by chronic pulmonary obstruction and infections,

pancreatic insufficiency, male infertility and elevated sweat chloride concentrations.<sup>1</sup> Over 1500 sequence variations in the *Cystic Fibrosis Transmembrane conductance Regulator* (*CFTR*) gene have been identified in CF and in a number of *CFTR*-related disorders (*CFTR*-RD).<sup>2</sup> *CFTR*-RD are defined as clinical entities where there is evidence of *CFTR* dysfunction but where the criteria for the diagnosis of CF are not met,<sup>3</sup> and mostly include isolated male infertility due to congenital bilateral absence of the vas deferens (CBAVD (MIM 277180)),<sup>4</sup> disseminated bronchiectasis<sup>5,6</sup> and chronic pancreatitis.<sup>7,8</sup> *CFTR* mutations have diverse effects on *CFTR* protein expression and function.<sup>9</sup> The wide phenotypic spectrum associated with some genotypes, probably influenced by environmental and modifying genetic factors,<sup>3</sup> complicates genetic counselling.

The R117H mutation was initially considered as a mutation causing mild CF with pancreatic sufficiency,<sup>10</sup> in keeping with a residual *CFTR* function supported by in vitro studies.<sup>11</sup> R117H was then considered as predominantly associated with isolated CBAVD,<sup>4,12-14</sup> generally in compound heterozygosity with F508del, the most frequent CF mutation. Incidentally, the [R117H]+[F508del] genotype was observed in asymptomatic individuals.<sup>15</sup> Phenotypic variability was mostly attributed to the presence of a polypyrimidine variant in the intron 8 acceptor splice site (T5 or T7) in *cis* with R117H, leading to R117H;T5 or R117H;T7 alleles. While the T7 variant is considered neutral, the T5 variant was shown to affect exon 9 splicing reducing the amount of *CFTR* protein, probably causing a more severe phenotype.<sup>15,16</sup> It was therefore suggested to consider R117H as a CF mutation only in the context of the R117;T5 complex allele.<sup>17</sup> However, early pulmonary manifestations were reported in patients carrying a severe CF mutation and R117H;T7.<sup>16,18-20</sup> The implementation of systematic CF newborn screening (CFNBS) since 2002 in France, relying on determination of immunoreactive trypsinemia (IRT) and subsequent

screening for 30 common *CFTR* mutations when IRT is above 65 µg/l, led to observe a much higher frequency of R117H;T7 in this population than in CF patients,<sup>21</sup> adding further to the diagnostic dilemma.<sup>16 21–24</sup> To assist with genetic counselling and to improve diagnostic practice, we implemented a large collaborative study to: (1) delineate the overall disease phenotype associated with R117H, and (2) evaluate the penetrance of CF in carriers of the [R117H]+[F508del] genotype—that is, the probability of individuals with this genotype to develop CF. Another issue was to determine to what extent CFNBS methods select for [R117H]+[F508del] newborns.

## SUBJECTS AND METHODS

### Cross-sectional phenotypic study of individuals compound heterozygous for R117H and F508del

All individuals known to the French CF Laboratory Network before 1 January 2008 who were heterozygous for R117H and F508del were included. These were part of a larger record of all individuals carrying two *CFTR* mutations with R117H at least on one allele (manuscript in preparation). *CFTR* gene analysis had been performed for a CF or *CFTR*-RD phenotype, a positive family history, or in the framework of CFNBS. Data were centralised at the Centre of Clinical Investigation in Dijon. Genotype data, including the intron 8 poly(T) variant in *cis* of R117H, were collected by the French CF Laboratory Network. Clinical details were provided by the referring physicians on standardised forms including: gender; date of birth; reason for referral (classical CF presentation, respiratory symptoms, chronic sinus disease, pancreatitis, CBAVD, fetal bowel anomalies, positive family history or CFNBS); clinical features together with age at their diagnosis (including pulmonary, gastrointestinal, pancreatic, nasopharyngeal symptoms, CBAVD, foetal bowel abnormalities); neonatal IRT; sputum or oropharyngeal cultures; pulmonary function tests (PFT); sweat chloride concentrations determined by either Gibson and Cooke or Exsudose techniques<sup>25</sup> (indicative of CF:  $\geq 60$  mmol/l; borderline: 30–59 mmol/l in newborns and 40–59 mmol/l in older patients<sup>26</sup>).

Kaplan–Meier analysis was used to estimate the cumulative probability of observing clinical features at different ages. Stata software version 10 was used for statistical analyses.

### Epidemiological study in the French general population

The allelic prevalence of R117H ( $p_{R117H}$ ) and F508del ( $p_{F508del}$ ) and 95% confidence interval (CI) were determined by allele counting in a sample of healthy adult individuals of the French general population. Data were compiled from the French CF Laboratory Network as results of screening for about 30 frequent *CFTR* mutations (including R117H and F508del), performed between 2002 and 2006 in healthy partners of CF carriers or CF patients. These individuals had no personal or family history of CF or *CFTR*-RD.

Based on  $p_{R117H}$  and  $p_{F508del}$  and assuming Hardy–Weinberg equilibrium, the number of individuals expected to carry the [R117H]+[F508del] genotype in the French population was estimated to be  $p_{[R117H]+[F508del]} = 2 \times p_{R117H} \times p_{F508del}$ .

### Evaluation of the penetrance of CF in individuals with the [R117H]+[F508del] genotype

The penetrance was defined as the observed number of [R117H]+[F508del] patients with clinical CF, divided by the expected number of individuals with the [R117H]+[F508del] genotype, calculated as defined above.

### Epidemiological record in newborns screened for CF

To determine whether elevated IRT selects for [R117H]+[F508del] newborns, the number of [R117H]+[F508del] newborns identified through elevated IRT was compared with the total number of newborns expected to carry this genotype regardless of IRT, based on  $2 \times p_{R117H} \times p_{F508del}$ . Exhaustive data on newborns screened for CF from the 2002–2006 period, provided by the French Association for the Screening and Prevention of Infant Handicaps (AFDPHE), comprised: (1) the total number of newborns screened (NBS); (2) the number of newborns with elevated IRT; (3) the number of newborns with elevated IRT and the [R117H]+[F508del] genotype; (4) intron 8 poly(T) alleles in these children; (5) the number of newborns with elevated IRT and the F508del homozygous genotype.

## RESULTS

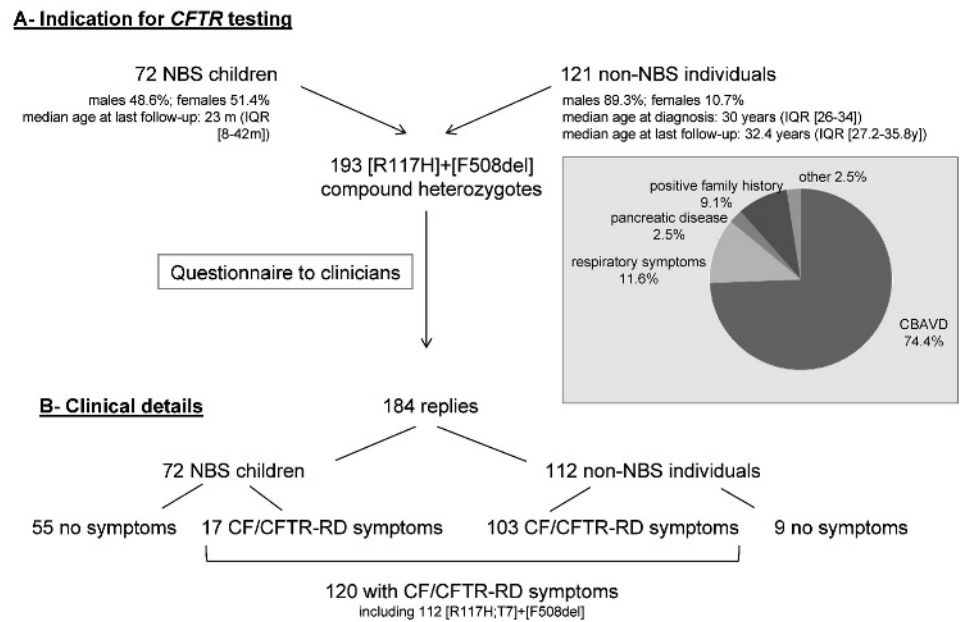
### Phenotypic description of patients compound heterozygous for R117H and F508del

Among 278 individuals carrying two *CFTR* mutations with R117H at least on one allele, 193 [R117H]+[F508del] individuals were identified: 121 were referred for diagnosis request or positive family history and 72 were discovered through CFNBS (fig 1A). Clinical data were available from 184/193 (95.3%), including 112 individuals who were not referred through newborn screening (non-NBS) and all NBS individuals (fig 1B) (detailed phenotypic description: manuscript in preparation). The poly(T) genotype was known in 173/184 (94.0%) individuals: 166/173 (96.0%) carried T7 and seven (4.0%) T5 in *cis* with R117H. Clinical presentations according to poly(T) variants are shown on table 1.

All individuals were living, apart from one non-NBS patient, who died of chronic hepatitis at 71 years. In the non-NBS group, sweat chloride concentrations using Gibson and Cooke or Exsudose techniques were available in 46 individuals: they were positive ( $\geq 60$  mmol/l) in 14 (30.4%), and borderline (30–59 mmol/l) in 18 (39.1%). In the NBS group, 55/72 children (76.4%) were asymptomatic. Sweat chloride values using Gibson and Cooke or Exsudose techniques, available in 56 children, were  $\geq 60$  mmol/l in 4 (7.1%) and from 30–59 mmol/l in 26 (46.4%). No correlation could be found between sweat chloride values and the phenotype—that is, in particular whether non-NBS patients had isolated CBAVD or a multi-organ disease with pulmonary symptoms.

The probabilities of occurrence of different symptoms with age were determined by Kaplan–Meyer analysis for the 166 [R117H;T7]+[F508del] patients (table 2). Pancreatic insufficiency was found in only three patients; in contrast, respiratory symptoms were quite frequent but generally moderate. Adult onset disseminated bronchiectasis was observed in seven non-NBS patients; *Pseudomonas aeruginosa* positive sputum cultures were recorded in only one non-NBS patient but six NBS children, three of whom had a positive sweat test (60, 72 and 76 mmol/l). One child, identified through CFNBS, presented with a classical CF phenotype, including recurrent severe pulmonary obstruction and infections, *P aeruginosa* colonisation and pancreatic insufficiency. She had a positive sweat test and nasal potential difference measurements identical to those found in classical CF. Comprehensive *CFTR* gene analysis failed to identify a further mutation or large gene rearrangement in *cis* with R117H;T7 in this child. The low number of patients with the T5 variant precluded any comparison of the phenotypes associated with R117H;T5 and R117H;T7.

**Figure 1** Cross-sectional phenotypic study in [R117H]+[F508del] compound heterozygous individuals. (A) Indications for *CFTR* testing, as reported by the French CF Laboratory Network. Other indications include: hyperechogenic bowel (n = 2) and constipation (n = 1). y: years; m: months. (B) Clinical details made available by the referring clinicians. Newborn screened (NBS) children and non-NBS individuals are indicated separately. In total, 120 patients carrying the [R117H]+[F508del] genotype were recorded with cystic fibrosis (CF) or *CFTR* related disorders (CFTR-RD) symptoms, of whom 112 had the R117H;T7 allele. The 72 NBS children included the 52 recorded for epidemiological data.



**Epidemiological data in the French general population**

A total of 5245 healthy adults with no family history of CF (10 490 chromosomes) were screened for frequent *CFTR* mutations. Of these, 151 carried one mutation (observed carrier frequency: 1/34.7), including 111 F508del ( $p_{F508del} = 1.06\%$ , 95% CI 0.87% to 1.27%) and 30 R117H ( $p_{R117H} = 0.29\%$ , 95% CI 0.19% to 0.41%) (fig 2A). No compound heterozygote was found. The intron 8 poly(T) variant was determined in 28/30 R117H carriers: all had the T7 variant.  $p_{R117H;T7}$  was thus 0.27% (95% CI 0.17% to 0.37%) and  $p_{R117H;T5} < 0.01\%$ . Based on these data, and in the absence of selective mortality associated with

the [R117H;T7]+[F508del] genotype, the expected  $P_{[R117H;T7]+[F508del]}$  is 1/17 470 ( $2 \times 0.0106 \times 0.0027$ , 95% CI 0.0001% to 0.032%), equivalent to 3650 individuals in the French population of 63 750 000 inhabitants.

**Evaluation of the penetrance of CF in individuals with the [R117H;T7]+[F508del] genotype**

As R117H;T5 was not detected in the sample of 5245 healthy adult individuals, the penetrance was evaluated only for the [R117H;T7]+[F508del] genotype. While 3650 French individuals would be expected to carry the [R117H;T7]+[F508del]

**Table 1** Clinical presentations in the 184 [F508del]+[R117H] compound heterozygous individuals, according to the poly(T) variant

	NBS children (n = 72)		Non-NBS individuals (n = 112)	
	Asymptomatic (No. of individuals)	CF/CFTR-RD symptoms (No. of individuals)	Asymptomatic (No. of individuals)	CF/CFTR-RD symptoms (No. of individuals)
R117H;T7 (n = 166)	47	14: - 1 classical CF - 3 moderate pulmonary + nasopharyngeal - 7 moderate pulmonary - 3 nasopharyngeal	7	98: - 1 severe DB +CRS +CBAVD - 1 severe DB+CRS - 2 DB+CBAVD - 2 DB - 7 moderate pulmonary+CRS+CBAVD - 9 moderate pulmonary+CBAVD - 4 moderate pulmonary+CRS - 1 moderate pulmonary+pancreatic+CBAVD - 7 moderate pulmonary - 6 CRS+CBAVD - 3 pancreatic+CBAVD - 1 CRS - 2 pancreatic - 52 isolated CBAVD
R117H;T5 (n = 7)	2	1: - 1 nasopharyngeal	1	3: - 1 severe DB+CRS - 1 moderate pulmonary - 1 isolated CBAVD
R117H;T?‡ (n = 11)	6	2: - 1 moderate pulmonary - 1 pancreatic	1	2: - 2 isolated CBAVD
Total	55	17	9	103

CBAVD, congenital bilateral absence of vas deferens; CRS, chronic rhinosinusitis; DB, disseminated bronchiectasis; NBS, newborn screened; Non-NBS, non-newborn screened (individuals who were not referred through newborn screening); R117H;T?, cases where the poly(T) variant was not determined or documented.

**Table 2** Probability of occurrence of clinical features at specific age in 166 French [F508del]+[R117H;T7] compound heterozygous individuals

	NBS children (n = 61)			Non-NBS individuals (n = 105)				
	No. of affected cases/no. of patients with available data	Frequency (%)	Penetrance of clinical features (%) <sup>*</sup> at age (years) 2 (99% CI)	No. of affected cases/no. of patients with available data	Frequency (%)	Penetrance of clinical features (%) <sup>*</sup> at age (years)		
						2 (99% CI)	10 (99% CI)	30 (99% CI)
Pulmonary symptoms	10/59	17	21 (10 to 42)	29/96	30	8 (3 to 19)	16 (8 to 28)	28 (17 to 42)
Asthma	7/59	12	15 (6 to 37)	9/96	9	4 (1 to 14)	8 (4 to 20)	10 (4 to 21)
Disseminated bronchiectasis	0/59	0	0 (NA)	7/96	7	0 (NA)	0 (NA)	5 (1 to 16)
Nasopharyngeal symptoms	7/59	12	14 (5 to 37)	18/92	20	5 (2 to 16)	9 (4 to 21)	20 (11 to 34)
Chronic sinusitis	7/59	12	14 (5 to 37)	13/92	14	5 (2 to 16)	10 (4 to 22)	15 (8 to 28)
Nasal polyposis	0/59	0	0 (NA)	7/92	8	0 (NA)	0 (NA)	8 (3 to 21)
Pancreatic symptoms	1/59	2	2 (0 to 20)	7/84	8	0 (NA)	0 (NA)	8 (3 to 23)
Pancreatic insufficiency	1/59	2	2 (0 to 20)	2/84	2	0 (NA)	0 (NA)	2 (0 to 19)
Chronic pancreatitis	0/59	0	0 (NA)	0/84	0	0 (NA)	0 (NA)	0 (NA)
Acute pancreatitis	0/59	0	0 (NA)	5/84	6	0 (NA)	0 (NA)	4 (1 to 18)
<i>Staphylococcus aureus</i> positive sputum/oropharyngeal cultures <sup>†</sup>	19/49	39	37 (21 to 59)	10/37	27	0 (NA)	12 (3 to 36)	31 (13 to 63)
<i>Pseudomonas aeruginosa</i> positive sputum/oropharyngeal cultures <sup>†</sup>	6/49	12	13 (4 to 35)	1/39	3	0 (NA)	0 (NA)	0 (NA)

NA, not applicable; NBS, newborn screened; non-NBS, individuals who were not referred through newborn screening.

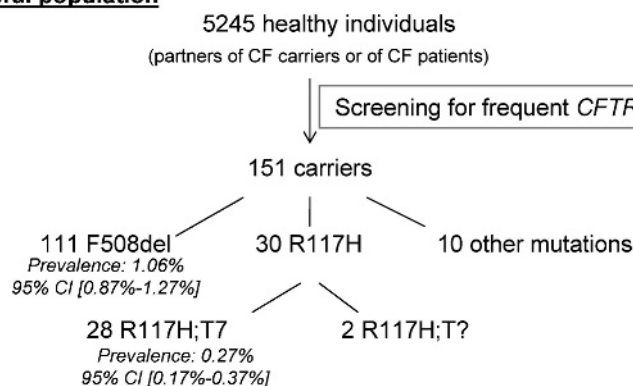
<sup>\*</sup>Results are Kaplan–Meier estimates

<sup>†</sup>Oropharyngeal cultures in NBS children; sputum cultures in non-NBS individuals.

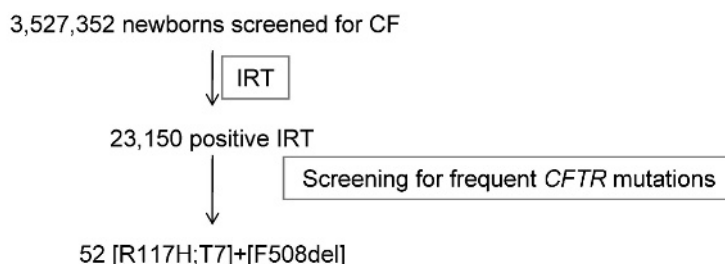
genotype, only 112 (3.1%) with CF related symptoms were counted in the record of the French CF Laboratory Network, comprising 14 NBS and 98 non-NBS (table 1). Only one case of classical CF in childhood was recorded, which estimates the penetrance of classical CF in childhood, irrespective of age, as 0.03% (1/3650, 95% CI 0.0007% to 0.1526%). Two adult patients had CF with a severe pulmonary disease (disseminated bronchiectasis and forced expiratory volume in 1 s (FEV<sub>1</sub>) <60% of predicted value), for an estimated penetrance of delayed severe CF symptoms in adulthood of 0.06% (2/3650, 95% CI 0.0066% to 0.1978%).

**Figure 2** Epidemiological data in (A) the French general population and (B) newborn screened (NBS) children. For clarity, data regarding frequent mutations other than R117H and F508del are not indicated. Data regarding the general population were collected from the French CF Laboratory Network. Those regarding cystic fibrosis (CF) newborn screening for the 2002–2006 period were made available by the French Association for the Screening and Prevention of Infant Handicaps (AFDPHE). R117H;T?: designates cases where the intron 8 poly(T) variant was not determined or documented. IRT, immunoreactive trypsinemia.

### A- General population



### B- Newborns screened for CF



estimated 25.7% (95% CI 19.9% to 32.3%) of newborns carrying the [R117H;T7]+[F508del] genotype were identified through CFNBS, as compared with 83.8% (95% CI 79.8% to 87.3%) of F508del homozygous newborns ( $p < 0.001$ ).

## DISCUSSION

### A very low disease penetrance for R117H

Because of the need for accuracy in genetic counselling, diagnosis and follow-up in newborns carrying R117H and a CF causing mutation, a national collaborative study in France was set up to establish the overall phenotype associated with R117H and to evaluate the disease penetrance of the [R117H]+[F508del] genotype. The measured prevalence of F508del and R117H alleles in the French general population were very similar to those found in a US population ( $p_{R117H} = 0.29\%$  vs 0.3% and  $p_{F508del} = 1.06\%$  vs 1.2%).<sup>27</sup> Moreover, according to the overall incidence of CF recently reassessed in France at 1/4136 and F508del frequency at 67.2% of CF chromosomes,<sup>21</sup>  $p_{F508del}$  in the general population would be expected to be 1.05%, which is also very close to the value we determined. Therefore, the selection of healthy individuals, partners of CF carriers with no familial history of CF or CFTR-RD did not lead to any evident bias in allele prevalence estimation. The prevalences of F508del and R117H;T7 thus permitted the estimation of the number of individuals expected to carry the [R117H;T7]+[F508del] genotype in the French general population at 3650.

Our study revealed that only 3.1% (112/3650) of the individuals expected to carry the [R117H;T7]+[F508del] genotype have been tested for *CFTR* mutations because of clinical CF or CFTR-RD symptoms. The measured penetrance of severe CF in childhood in this group was only 0.03% and that of delayed severe CF symptoms in adulthood only 0.06%. The penetrance of CFTR-RD cannot be precisely evaluated because, despite an exhaustive record of cases by the French CF Laboratory Network, a number of patients with mild pulmonary symptoms, pancreatitis or CBAVD may not be tested for *CFTR* mutations or may ignore their condition throughout their life. The difference in sex ratio in non-NBS individuals (males/females = 8.3) versus NBS individuals (males/females = 0.95) is compatible with CBAVD being the principal reason for referral in the non-NBS group and supports a very low disease penetrance in women. Beside the single case of classical CF, 13 other NBS children had symptoms that were not specific for CF, mostly bronchial hyperreactivity and nasopharyngeal symptoms. *P. aeruginosa* was found in oropharyngeal cultures in six NBS children (12%), of whom three had positive sweat tests, but whether this is predictive of susceptibility to *P. aeruginosa* infection or colonisation is unclear. In fact, this figure is surprisingly very similar to that of 13% NBS infants with true CF found with *P. aeruginosa* positive oropharyngeal cultures by Armstrong *et al.*<sup>28</sup>

Overall, clinical data in NBS children should be taken with caution, except the CF case, because of the very limited follow-up. Data from prospective regular follow-up of these children should improve the diagnostic classification of this cohort.

In other respects, because of a lack of correlation between sweat chloride values and the phenotype, it would be interesting to determine whether other physiological tests, such as nasal potential difference measurements, could be more accurate, especially in NBS children,<sup>29,30</sup> in order to identify those who are prone to develop lung disease requiring regular clinical assessments and treatment.

### Phenotypic variability is not fully explained by the IVS8 poly(T) variation

The very low frequency of R117H;T5 in our population (but not T5 in isolation)<sup>31</sup> has precluded any correlation between phenotype and the poly(T) variation in *cis* with R117H. The presence in our study of a severe CF case associated with R117H;T7 and the previously described overlap between patients carrying R117H;T5 and R117H;T7 show that the commonly cited correlation between phenotype and the poly(T) variant in *cis* with R117H has limitations.<sup>16,18–20,32</sup> However, as R117H;T5 seems to be more frequent in Australian and UK populations and has been associated with a more severe phenotype than R117H;T7,<sup>15,16</sup> determination of the poly(T) variant may still be recommended whenever R117H is detected and R117H;T5 cautiously be considered as a mild CF mutation. Interestingly, five of the seven cases with R117H;T5 originated from Normandy, a north-western area of France which may have common ancestry with the UK.

### To what extent does CFNBS detect newborns with R117H?

Based on  $p_{R117H;T7}$  and  $p_{F508del}$  in the general population, one quarter of [R117H;T7]+[F508del] newborns appear to have elevated IRT and be identified through CFNBS, as compared with 83.7% of expected F508del homozygous newborns. This figure of 83.7%, instead of 100%, could be attributed to the loss of F508del homozygous fetuses due to prenatal diagnoses rather than to incomplete penetrance of the F508del homozygous genotype or overestimation of F508del prevalence, as discussed above. Furthermore, given the low disease penetrance detected in the present study for the [R117H;T7]+[F508del] genotype, we could hypothesise that only a minority of the newborns would develop clinical CF symptoms. These data show that the [R117H;T7]+[F508del] genotype is selected by CFNBS and provide further evidence that not only classical CF but also equivocal cases, CFTR-RD and a number of asymptomatic cases are selected by CFNBS.<sup>21,33</sup>

### Implications for CFNBS and genetic counselling

The pertinence of including R117H and mild CF mutations in CFNBS mutation panels has been debated because of the consequences of making a genetic diagnosis of CF in newborns who might not become symptomatic for years, if at all.<sup>16,19,22–24,26,34,35</sup> Bearing in mind that the aim of CFNBS is the earlier diagnosis of classical forms of CF, our results provide strong

#### Key points

- ▶ The penetrance of classical cystic fibrosis (CF) for the [R117H;T7]+[F508del] genotype was evaluated at 0.03%, and that of severe CF in adulthood at 0.06%.
- ▶ It was estimated that only 3.1% of individuals expected to carry the [R117H;T7]+[F508del] genotype in the French population have been tested for *CFTR* mutations because of clinical CF or CFTR-RD symptoms or a positive family history.
- ▶ R117H on an intron 8 T7 background should be considered principally as a CFTR-RD-associated mutation with reduced penetrance.
- ▶ CF newborn screening identifies not only classical CF but also equivocal cases, CFTR-RD and a number of asymptomatic cases.
- ▶ Withdrawal of R117H from CF mutation panels used for screening programmes should be considered.

arguments in favour of removing R117H from CFNBS mutation panels. However, as withdrawal of R117H would lead to further *CFTR* testing in NBS children with abnormal neonatal IRT and a positive or borderline sweat test, inclusion of R117H in a second-step panel would be a good compromise. With regard to diagnosis and genetic counselling, R117H;T7 should be considered principally as a *CFTR*-RD associated mutation with reduced penetrance. This is of critical importance, as CFNBS is being implemented in an increasing number of countries.<sup>26 36 37</sup> As a result, it does not seem justified to automatically offer prenatal diagnosis to the parents of asymptomatic NBS children and cascade screening to their healthy relatives. Moreover, removal of R117H from CF mutation panels used for carrier screening should be considered, as healthy carriers of R117H could wrongly be considered CF carriers and prenatal diagnosis be improperly performed.

Finally, this study highlights the need to assess the real impact of so-called disease mutations carefully before including them in screening programmes, either for newborn or carrier screening programmes.

**Author affiliations:** <sup>1</sup> Centre de Génétique, Hôpital d'Enfants, CHU de Dijon, Dijon, France; <sup>2</sup> AFDPE, Paris, France; <sup>3</sup> French CF Care Centres, France; <sup>4</sup> CRCM - Service de gastro-entérologie-mucoviscidose et nutrition pédiatriques, Hôpital Robert Debré, APHP, Paris, France; <sup>5</sup> CRCM - Service de Pédiatrie 1, Hôpital d'Enfants, CHU Dijon, Dijon, France; <sup>6</sup> Inserm U794 et Fondation Jean Dausset/CEPH, Paris, France; <sup>7</sup> INED, Paris, France; <sup>8</sup> Unité INSERM U866 CIE1, Faculté de médecine de Dijon, CHU Dijon, Dijon, France; <sup>9</sup> French CF Laboratory Network, France; <sup>10</sup> Laboratoire de Génétique Moléculaire et d'Histocompatibilité, CHU de Brest, Brest, France; <sup>11</sup> Pôle de Biochimie et Biologie Moléculaire, Centre de Biologie Pathologie, CHU de Lille, Lille, France; <sup>12</sup> Laboratoire de Génétique Moléculaire, IURC, CHU de Montpellier, Montpellier, France; <sup>13</sup> Laboratoire de Biochimie-Génétique, Hôpital Cochin, APHP, Paris, France; <sup>14</sup> Laboratoire de Biochimie Génétique, Hôpital Robert Debré, APHP, Paris, France; <sup>15</sup> Service de Génétique Médicale, Laboratoire de Génétique Moléculaire, CHU Hôtel Dieu, Nantes, France; <sup>16</sup> Service d'Endocrinologie Moléculaire et Maladies rares, Centre de Biologie et Pathologie Est, CHU de Lyon, Bron, France; <sup>17</sup> Laboratoire de Biochimie et Biologie Moléculaire, Hôpital d'Enfants Armand Trousseau, APHP, Paris, France; <sup>18</sup> Laboratoire Pol Bouin, UF Biologie Cellulaire, Hôpital de la Maison Blanche, CHU de Reims, Reims, France; <sup>19</sup> Service de Génétique Médicale, Hôpital Purpan, CHU de Toulouse, Toulouse, France; <sup>20</sup> Laboratoire de Génétique Moléculaire, Groupe Hospitalier Pellegrin, CHU de Bordeaux, Bordeaux, France; <sup>21</sup> Laboratoire SESEP, Centre hospitalier de Versailles, Le Chesnay, France; <sup>22</sup> Service de Biochimie-Génétique et Inserm U955 équipe 11, Groupe Henri Mondor-Albert Chenevier, APHP, Créteil, France; <sup>23</sup> CRCM - Service de Pneumologie, Hôpital Cochin, APHP, Paris, France; <sup>24</sup> CRCM - Service de Médecine interne, Centre hospitalier Lyon sud, Pierre-Bénite, France; <sup>25</sup> CRCM - Service de Pédiatrie générale, Hôpital Necker-Enfants-Malades, APHP, Paris, France; <sup>26</sup> CRCM - Centre de Perharidy, Roscoff, France; <sup>27</sup> Service de Néonatalogie, SIHCUS - CMCO, Schiltigheim, France; <sup>28</sup> CRCM - Service de pneumologie et immunoallergologie, CHRU de Lille, Lille, France; <sup>29</sup> CRCM - Clinique de pédiatrie, CHRU de Lille, Lille, France; <sup>30</sup> CRCM Lyon Pédiatrie, Groupement Hospitalier Lyon Est, Bron, France; <sup>31</sup> CRCM - Unité de transplantation thoracique, CHU Hôpital Guillaume et René Laënnec, Nantes, France; <sup>32</sup> CRCM - Service de Pédiatrie, CHI de Créteil, France; <sup>33</sup> CRCM - Service de pneumologie pédiatrique, Hôpital d'Enfants Armand-Trousseau, APHP, Paris, France; <sup>34</sup> Centre d'Épidémiologie Clinique, Hôpital Robert Debré, APHP, Paris, France; <sup>35</sup> Laboratoire de Diagnostic moléculaire, Service de Médecine Génétique, Hôpitaux Universitaires, Geneva, Switzerland; <sup>36</sup> CRCM - Département de médecine de l'enfant et de l'adolescent, CHU de Rennes - Hôpital Sud, Rennes, France

**Other members of the Collaborating Working Group on R117H: Referring molecular geneticists of the French CF Laboratory Network** (34 molecular genetics laboratories): Dr A Bazin (Saint-Ouen l'Aumône), Dr M Blayau (Rennes), Dr JP Bonnefont (Paris), Dr J Bouligand (Le Kremlin Bicêtre), Dr M Chéry (Nancy), Dr F Chevalier-Porst (Lyon), Dr JM Costa (Saint-Ouen l'Aumône), Dr M Coude (Le Mans), Dr I Creveaux (Clermont-Ferrand), Dr V Dalstein (Reims), Dr A de Becdelièvre (Créteil), Dr F Gerson (Nantes), Dr S Gobin-Limballe (Paris), Dr AM Gouget (Besançon), Pr A Kitizis (Poitiers), Dr C Lagier-Tourenne (Strasbourg), Dr C Magdelaine (Limoges), Dr MC Malinge (Angers), Dr P Malzac (Marseille), Dr H Mitre (Caen), Dr V Petit (Epinal), Dr C Philippe (Vandoeuvre-les-Nancy), Dr P Ray (Grenoble), Dr M Raynaud (Tours), Dr C Ronsin (Ivry-sur-Seine), Dr S Schmitt (Nantes). **Referring physicians who provided the clinical data (47 CF care centres):** Pr M Abely (Reims), Dr M Albert (Poissy), Dr L Bassinet (Créteil), Dr S Bonnefoy (Paris), Dr G Bourouillou (Toulouse), Dr F Bremont (Toulouse), Dr MP Brechard (Marseille), Dr C Chardot (Le Kremlin Bicêtre), Dr MC Chevalier (Le Mans), Dr J Chiesa (Nîmes), Dr R Chiron (Montpellier), Dr A

Ciolkovich (Agen), Dr P Collignon (Toulon), Dr F Counil (Montpellier), Dr P Costa (Nîmes), Dr A David (Nantes), Dr V David (Nantes), Pr C Delacourt (Créteil), Dr D Delafontaine (Paris), Dr F Delepouille (Dunkerque), Dr MA Delrue (Bordeaux), Dr E Deneuille (Rennes), Dr J Derelle (Nancy), Pr B Desrués (Rennes), Dr S Dominique (Rouen), Dr AL Fanton (Dijon), Dr E Flori (Strasbourg), Dr P Foucaud (Le Chesnay), Dr S Froment (Tours), Dr D Gaillard (Reims), Pr P Giacomini (Reims), Dr C Gambert (Poitiers), Dr E Gautier (Neuilly), Dr JL Ginies (Angers), Dr E Ginglinger (Mulhouse), Dr F Gottrand (Lille), Dr A Guichet (Angers), Dr M Guillot (Lisieux), Dr D Hairion (Marseille), Dr MC Heraud (Clermont-Ferrand), Dr E Houriez-Bertolo (Nancy), Dr V Izard (Le Kremlin-Bicêtre), Dr L Janny (Clermont-Ferrand), Dr E Jeandidier (Mulhouse), Dr H Journal (Vannes), Dr G Karsenty (Marseille), Dr Labarière, Dr K Lahsinat (Elboeuf), Dr S Langlais (Montreuil), Dr J Languépin (Limoges), Dr L Laurans (Caen), Dr D Lauton (Montpellier), Dr V Layet (Le Havre), Dr M Le Bourgeois (Paris), Dr L Lannou (Rennes), Pr H Lejeune (Lyon), Pr G Lenoir (Paris), Dr F Lestrade (Metz), Dr C Llerena (Grenoble), Dr B Marc (Béziers), Dr S Marchand (Tours), Pr C Marguet (Rouen), Dr O Marteletti (Lens), Dr G Massat (Toulouse), Dr L Mely (Giens), Dr C Menetrey (Limoges), Dr V Moisan-Petit (Vannes), Dr S Montcouquiol (Nancy), Dr L Moreau (Nice), Pr S Odent (Rennes), Dr M Pagenault (Rennes), Pr P Parent (Brest), Dr JC Pautard (Amiens), Dr MO Peter (Mulhouse), Dr D Pierre (Nancy), Dr I Pin (Grenoble), Dr G Plessis (Caen), Dr S Ramel (Roscoff), Dr F Rembert-Sagot (Dunkerque), Dr N Rives (Rouen), Dr J Rollet (Lyon), Dr A Rossi (Bois Guillaume), Dr C Roux (Besançon), Pr D Royere (Tours), Dr A Sardet (Lens), Pr J Sarles (Marseille), Pr JP Siffroi (Paris), Pr JP Saulnier (Poitiers), Dr J Sehabiague (Agen), Dr PM Sinet (Paris), Pr JC Soufir (Le Kremlin-Bicêtre), Dr E Tassin (Le Chesnay), Dr F Terro (Limoges), Pr D Turck (Lille), Pr A Valeri (Brest), Dr MV Vodoff (Mulhouse), Dr L Wagner (Nîmes), Dr L Weiss (Strasbourg).

**Acknowledgements:** Dr I Giurgea is acknowledged for critical reading of the manuscript.

**Contributors:** Participation in the design of the study—CTR, AM, CB and E Girodon. Providing epidemiological data—all members of the French CF laboratory network, including those listed above. Providing data on CFNBS—AM, EH, MR. Providing clinical data—all members of French CF Care Centres, including those listed above. Collection, analysis and interpretation of the data—CTR, E Gautier, E Girodon. Statistical analysis—EGénin, GB, EGautier, CB, CBK, CAB. Writing and critical reading of the manuscript—CTR, MAM, LF, MG, EGirodon. All authors have seen and approved the final version.

**Funding:** This work was supported by a grant from the University Hospital of Dijon, the "Conseil Régional de Bourgogne" and the French CF Foundation "Vaincre La Mucoviscidose".

**Competing interests:** None.

**Patient consent:** Not required.

**Provenance and peer review:** Not commissioned; externally peer reviewed.

## REFERENCES

1. **Welsh MJ**, Ramsey BW, Accurso F, Cutting GR. Cystic fibrosis. In: Scriver CR, Beaudet AL, Sly WS, Valle D, eds. *Metabolic and molecular bases of inherited disease*, 8th ed. New York: McGraw-Hill, 2001:5121–88.
2. **Cystic Fibrosis Mutation Database**. [www.genet.sickkids.on.ca/cftr/](http://www.genet.sickkids.on.ca/cftr/).
3. **Castellani C**, Cuppens H, Macek Jr M, Cassiman J, Kerem E, Durie P, Tullis E, Assal B, Bombieri C, Brown A, Casals T, Claustres M, Cutting G, Dequeker E, Dodge J, Doull I, Farrell P, Ferec C, Girodon E, Johannesson M, Kerem B, Knowles M, Munck A, Pignatti P, Radjokovic D, Rizzotti P, Schwarz M, Stuhmann M, Tzetzis M, Zielenski J, Elborn S. Consensus on the use and interpretation of cystic fibrosis mutation analysis in clinical practice. *J Cyst Fibros* 2008;**7**:179–96.
4. **Claustres M**, Guittard C, Bozon D, Chevallier F, Verlingue C, Férec C, Girodon E, Cazeneuve C, Bienvenu T, Lalau G, Dumur V, Feldman D, Bieth E, Blayau M, Clavel C, Creveaux I, Malinge MC, Monnier N, Malzac P, Mitre H, Chomel JC, Bonnefont JP, Iron A, Chery M, Des Georges M. Spectrum of *CFTR* mutations in cystic fibrosis and in congenital absence of the vas deferens in France. *Hum Mutat* 2000;**16**:143–56.
5. **Girodon E**, Cazeneuve C, Lebargy F, Chinet T, Costes B, Ghanem N, Martin J, Lemay S, Scheid P, Housset B, Bignon J, Goossens M. *CFTR* gene mutations in adults with disseminated bronchiectasis. *Eur J Hum Genet* 1997;**5**:149–55.
6. **Pignatti PF**, Bombieri C, Marigo C, Benetazzo M, Luisetti M. Increased incidence of cystic fibrosis gene mutations in adults with disseminated bronchiectasis. *Hum Mol Genet* 1995;**4**:635–9.
7. **Cohn JA**, Friedman KJ, Noone PG, Knowles MR, Silverman LM, Jowel PS. Relation between mutations of the cystic fibrosis gene and idiopathic pancreatitis. *N Engl J Med* 1998;**339**:653–8.
8. **Sharer N**, Schwarz M, Malone G, Howarth A, Painter J, Super M, Brazanga J. Mutations of the cystic fibrosis gene in patients with chronic pancreatitis. *N Engl J Med* 1998;**339**:645–52.
9. **Zielenski J**. Genotype and phenotype in cystic fibrosis. *Respiration* 2000;**67**:117–33.
10. **Dean M**, White MB, Gerrard B, Stewart C, Khaw K-T, Leppert M. Multiple mutations in highly conserved residues are found in mildly affected cystic fibrosis patients. *Cell* 1990;**61**:863–70.

11. **Sheppard DN**, Rich DP, Ostedgaard LS, Gregory RJ, Smith AE, Welsh M. Mutations in CFTR associated with mild-disease-form chloride channels with altered pore properties. *Nature* 1993;**362**:160–4.
12. **Chillon M**, Casals T, Mercier B, Brassas L, Lissens W, Silber S, Romey MC, Ruiz-Romero J, Verlingue C, Claustres M, Nunes V, Férec C, Estivill X. Mutations in the cystic fibrosis gene in patients with congenital absence of the vas deferens. *N Engl J Med* 1995;**332**:1475–80.
13. **Gervais R**, Dumur V, Rigot JM, Lafitte JJ, Roussel P, Claustres M, Demaille J. High frequency of the R117H cystic fibrosis mutation in patients with congenital absence of the vas deferens. *N Engl J Med* 1993;**328**:447–57.
14. **Rathi I**, Legendre M, Niel F, Martin J, Soufir JC, Izard V, Costes B, Costa C, Goossens M, Girodon E. Detection of cystic fibrosis transmembrane conductance regulator (CFTR) gene rearrangements enriches the mutation spectrum in congenital bilateral absence of the vas deferens and impacts on genetic counselling. *Hum Reprod* 2007;**22**:1285–91.
15. **Kiesewetter S**, Macek Jr M, Davis C, Curristin SM, Chu CS, Graham C, Shrimpton AE, Cashman SM, Tsui LC, Mickle J, Amos J, Highsmith WE, Shuber A, Witt DR, Crystal RG, Cutting GR. A mutation in CFTR produces different phenotypes depending on chromosomal background. *Nat Genet* 1993;**5**:274–8.
16. **Massie RJ**, Poplawski N, Wilcken B, Goldblatt J, Byrnes C, Robertson C. Intron-8 polythymidine sequence in Australasian individuals with CF mutations R117H and R117C. *Eur Respir J* 2001;**17**:1195–200.
17. **Rosenstein BJ**, Cutting GR. The diagnosis of cystic fibrosis: a consensus statement. *J Pediatr* 1998;**132**:589–95.
18. **Lording A**, McGaw J, Dalton A, Beal G, Everard M, Taylor CJ. Pulmonary infection in mild variant cystic fibrosis: implications for care. *J Cyst Fibros* 2006;**5**:101–4.
19. **O'Sullivan BP**, Zwerdling RG, Dorkin HL, Comeau AM, Parad R. Early pulmonary manifestation of cystic fibrosis in children with the DeltaF508/R117H-7T genotype. *Pediatrics* 2006;**118**:1260–5.
20. **Ren CL**. Pulmonary manifestations in deltaF508/R117H. *Pediatrics* 2007;**119**:647.
21. **Munck A**, Dhondt J-L, Sahler C, Roussey M. Implementation of the French nationwide cystic fibrosis newborn screening program. *J Pediatr* 2008;**153**:228–33, 233.e1.
22. **Curnow L**, Savarirayan R, Massie J. Genetic counselling after carrier detection by newborn screening when one parent carries DeltaF508 and the other R117H. *Arch Dis Child* 2003;**88**:886–8.
23. **Roussey M**, Le Bihannic A, Scotet V, Audrezet MP, Blayau M, Dagonne M, David V, Deneuve E, Giniès JL, Laurans M, Moisan-Petit V, Rault G, Vigneron P, Férec C. Neonatal screening of cystic fibrosis: diagnostic problems with CFTR mild mutations. *J Inher Metab Dis* 2007;**30**:613.
24. **Scotet V**, Audrezet MP, Roussey M, Rault G, Dirou-Prigent A, Journel H, Moisan-Petit V, Storni V, Férec C. Immunoreactive trypsin/DNA newborn screening for cystic fibrosis: should the R117H variant be included in CFTR mutation panels? *Pediatrics* 2006;**118**:1523–9.
25. **Clinical Laboratory Standards Institute** (formerly National Committee for Clinical Laboratory Standards). Sweat testing: sample collection and quantitative analysis. Approved guideline. Document C34-A2.2000.
26. **Farrell PM**, Rosenstein BJ, White TB, Accurso FJ, Castellani C, Cutting GR, Durie PR, Legrys VA, Massie J, Parad RB, Rock MJ, Campbell PW 3rd, Cystic Fibrosis Foundation. Guidelines for diagnosis of cystic fibrosis in newborns through older adults: Cystic Fibrosis Foundation consensus report. *J Pediatr* 2008;**153**:S4–14.
27. **Witt DR**, Schaefer C, Hallam P, Wi S, Blumberg B, Fishbach A, Holtzman J, Kornfeld S, Lee R, Nemzer L, Palmer R. Cystic fibrosis heterozygote screening in 5,161 pregnant women. *Am J Hum Genet* 1996;**58**:823–35.
28. **Jung A**, Kleinau I, Schönian G, Bauernfeind A, Chen C, Griese M, Döring G, Göbel U, Wahn U, Paul K. Sequential genotyping of *Pseudomonas aeruginosa* from upper and lower airways of cystic fibrosis patients. *Eur Respir J* 2002;**20**:1457–63.
29. **Sermet-Gaudelus I**, Girodon E, Huet F, Aboutaam R, Bui S, Deneuve E, Guillot M, Vrielynck S, Lenoir G, Edelman A. Nasal potential difference in cystic fibrosis diagnosis of very young children. *J Pediatr* 2007;**150**:e34–5.
30. **Sermet-Gaudelus I**, Roussel D, Bui S, Deneuve E, Huet F, Reix P, Bellon G, Lenoir G, Edelman A. The CF-CIRC study: a French collaborative study to assess the accuracy of cystic fibrosis diagnosis in neonatal screening. *BMC Pediatr* 2006;**6**:25.
31. **Costes B**, Girodon E, Ghanem N, Flori E, Jardin A, Soufir JC, Goossens M. Frequent occurrence of the CFTR intron 8 (TG)n5T allele in men with congenital bilateral absence of the vas deferens. *Eur J Hum Genet* 1995;**3**:285–93.
32. **Peckham D**, Conway SP, Morton A, Jones A, Webb K. Delayed diagnosis of cystic fibrosis associated with R117H on a background of 7T polythymidine tract at intron 8. *J Cyst Fibros* 2006;**5**:63–5.
33. **Massie J**, Curnow L, Tzanakos N, Francis I, Robertson CF. Markedly elevated neonatal immunoreactive trypsinogen levels in the absence of cystic fibrosis gene mutations is not an indication for further testing. *Arch Dis Child* 2005;**91**:222–5.
34. **Boyne J**, Evans S, Pollitt RJ, Taylor CJ, Dalton A. Many deltaF508 heterozygote neonates with transient hypertrypsinemia have a second, mild CFTR mutation. *J Med Genet* 2000;**37**:543–7.
35. **Southern KW**, Littlewood JM. Newborn screening programmes for cystic fibrosis. *Paediatr Respir Rev* 2003;**4**:299–305.
36. **Massie RJ**, Olsen M, Glazner J, Robertson CF, Francis I. Newborn screening for cystic fibrosis in Victoria: 10 years' experience (1989-1998). *Med J Aust* 2000;**172**:584–7.
37. **Southern KW**, Munck A, Pollitt R, Travert G, Zanolla L, Dankert-Roelse J, Castellani C, ECFS CF Neonatal Screening Working Group. A survey of newborn screening for cystic fibrosis in Europe. *J Cyst Fibros* 2007;**6**:57–65.